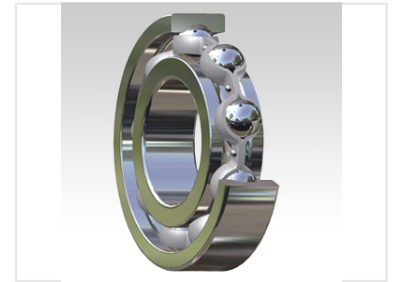


# 604 Deep Groove Ball Bearing

Featuring a simple design, these bearings are capable of supporting radial and axial loads in both directions. Precision-engineered with high-quality materials, the 604 bearings offer excellent durability and long service life.



## Overview

### Versatile 604 Deep Groove Ball Bearing

The 604 deep groove ball bearing is a versatile and reliable component designed for a wide range of industrial applications. Featuring a simple yet effective design, these bearings are capable of supporting radial and axial loads in both directions with ease. Precision-engineered with high-quality materials, they ensure smooth operation, reduced friction, and an extended service life for critical machinery.

## Performance Highlights

### Key Features

High Performance • Long Service Life • High Quality • Smooth Operation

## Technical Capabilities

### Load Support

- Radial load support
- Axial load support (both directions)

### Operational Efficiency

- Deep raceway grooves for efficiency
- Reduced friction design
- Minimized heat generation

## Applications

### Common Applications

Electric Motors, Gearboxes, Pumps, Industrial Machinery