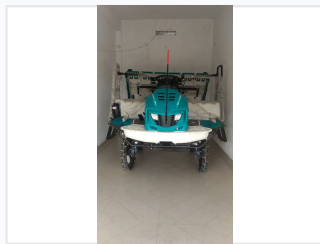
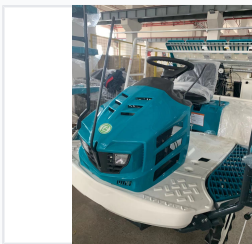


6-Row Self-Propelled Rice Transplanter

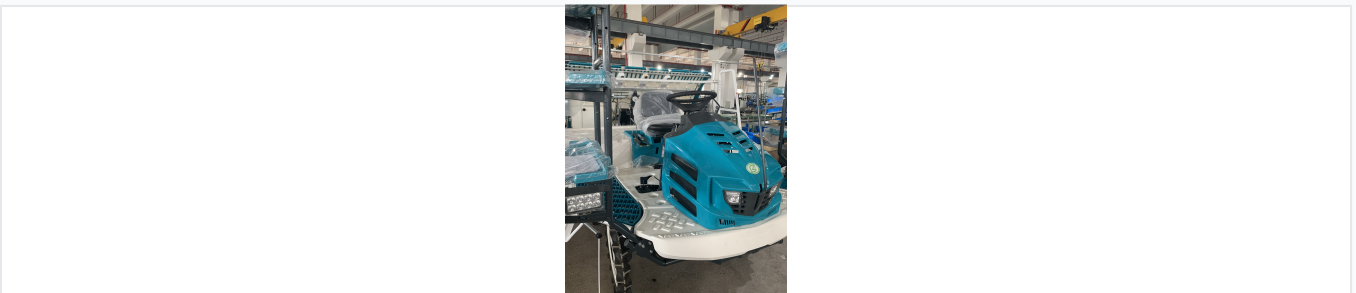
This 6-row self-propelled rice transplanter is designed for efficient and precise planting of rice seedlings in paddy fields. It features adjustable planting depth and row spacing to accommodate various crop requirements.



ADDITIONAL IMAGES



Product Overview



The 6-row riding-type transplanter maximizes productivity in large-scale paddy fields.

High-Efficiency 6-Row Rice Transplanter

This self-propelled riding-type rice transplanter is designed for professional paddy field operations, offering a significant increase in planting speed compared to manual methods. It features a robust diesel engine and a multi-row mechanism that allows for simultaneous planting across six rows, ensuring consistent depth and spacing. Engineered for durability and ease of use, this machine helps large-scale rice farming operations reduce labor costs while improving overall crop yield.

Performance Metrics

Key Performance Metrics

6 rows

Planting Rows

18.5 kW

Rated Power

25.2 PS

Engine Output

3600 r/min

Engine Speed

Engine & Power

Engine Type

Diesel Power

Operational Features

Operation Type

Self-Propelled • Riding Type • High Speed

Adjustable Settings

- Adjustable planting depth
- Adjustable row spacing
- Variable planting speed

Build & Design



Durable construction and precision planting arms ensure consistent seedling placement.

Design Highlights

- Ergonomic operator seat for reduced fatigue
- Intuitive control system
- Robust chassis for paddy field conditions
- Seedling tray for continuous operation
- Compact maneuverability for various field sizes

Quality & Service

Warranty Terms

One-year warranty with free replacement parts for quality issues

Service Benefits

Stable Supply, Professional Support, Quality Guaranteed