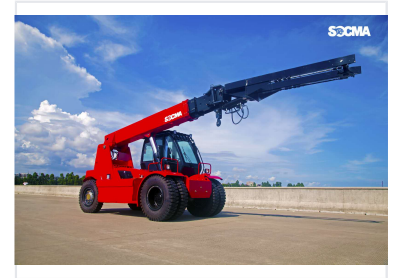


# 5T Telescopic Forklift Loader

This telescopic forklift is a versatile machine for loading and unloading, equipped with a fork and side shifter. It is suitable for lifting and stacking cargoes, and can also be used in installation and maintenance of road lighting and underground pipes.



## ADDITIONAL IMAGES



## Overview

### High-Performance Telescopic Loader

This 5-ton telescopic forklift loader is engineered for high-efficiency operations in construction, warehousing, and agricultural environments. Featuring a powerful diesel engine and a robust two-stage quadrilateral telescopic boom, it delivers exceptional load capacity and reach. The machine is designed with operator comfort and ease of use in mind, incorporating an ergonomic cabin with air conditioning and intuitive controls.

## Performance & Power

Rated Load Capacity	5 T
Transmission	Double turbo hydraulic torque converter with stepless speed change
Hydraulic System	Dual-pump combined system for reduced fuel and energy consumption

## Drivetrain & Steering

Drive Configuration	Four-wheel drive (Front wheel drive with rear axle steering)
Steering	Full hydraulic coaxial flow amplification steering system
Braking & Axle Features	Electronic handbrake, Electronic off-axle function

## Boom & Attachments

### Available Attachments

- Standard Forks
- Bucket
- Extension Forks
- Aerial Work Platform
- Fork Positioner
- Sideshifter

<b>Boom Structure</b>	Two-stage quadrilateral telescopic arm
-----------------------	--

<b>Quick Hitch Included</b>	Yes
-----------------------------	-----

## Operator Environment

<b>Cabin Amenities</b>	Air Conditioning, Radio, Fan, Air Suspension Seat, Wide View Design
------------------------	---

<b>Control System</b>	Joystick control valve distribution
-----------------------	-------------------------------------