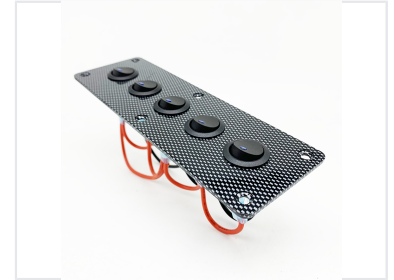
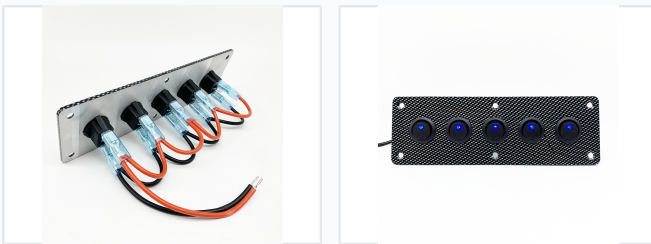


5-Gang Waterproof Rocker Switch Panel

This 5-gang rocker switch panel is designed for DC 12V/24V systems. It features waterproof LED rocker switches suitable for car and marine applications.



ADDITIONAL IMAGES



Product Overview



Professional 5-Gang Marine & Automotive Control Solution

This 5-gang rocker switch panel is engineered for high-performance DC 12V/24V systems in marine and automotive environments. Featuring a durable aluminum plate with a water transfer printing finish, it offers IP65 waterproof protection and corrosion resistance for long-term reliability. The pre-wired design and integrated blue LED indicators make it an ideal choice for managing multiple electrical circuits in boats, RVs, and off-road vehicles.

Technical Performance

Electrical Ratings

20 A Rating at 12V	10 A Rating at 24V
------------------------------	------------------------------

Operating Voltage Range	DC 12V - 24V
Operating Temperature	-25°C to +85°C

Design & Construction



Construction Materials	Aluminium, ABS, Metal, Rubber Seals
Panel Technology	Water transfer printing (Carbon Fiber Style)
Panel Size	18.2cm (L) x 6cm (W)

Features & Protection



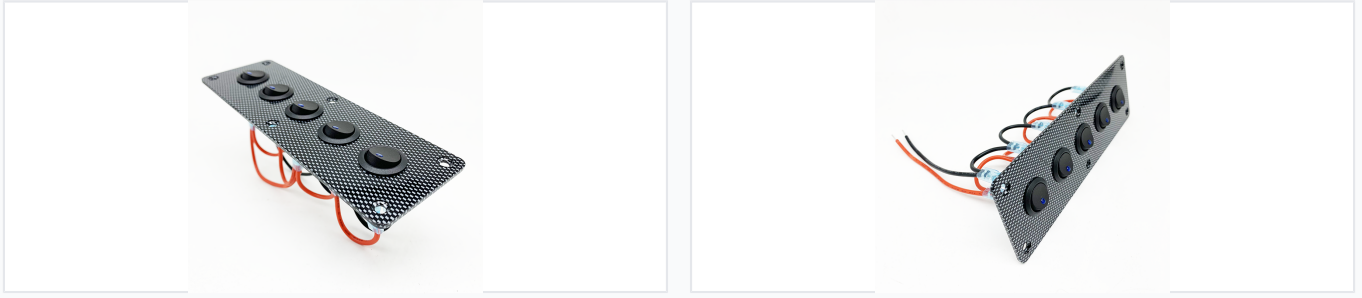
Ingress Protection

IP65 Waterproof • Dust-proof • Corrosion-resistant

Switch Configuration

- 5-Gang Rocker Switches
- Function: ON-OFF
- Integrated Blue LED Indicators
- Rubber Sealing Covers

Installation & Compatibility



Installation Details

- Pre-wired for simple setup
- Horizontal or vertical mounting
- Includes mounting screws
- Includes set of tabs/labels

Compatible Applications

Marine/Boats, Yachts, RVs/Caravans, Trucks, UTV/ATV, Buses, Airplanes

Manufacturing Quality



Internal Wiring Standards

Specification	Value
Wire Gauge	22AWG
Voltage Rating	600V
Max Temperature	105°C
Standard	AWM