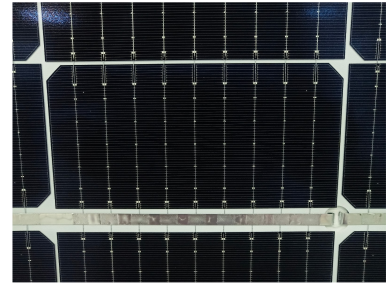
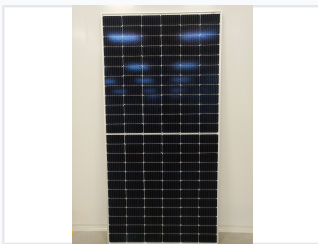


445W Monocrystalline Bifacial Double Glass Solar Panel

This monocrystalline solar panel utilizes multi-busbar and half-cut cell technology for improved current collection and reduced energy loss. It is designed to withstand a snow pressure of 5400Pa on the front and a wind pressure of 2400Pa on the rear.



ADDITIONAL IMAGES



Product Overview

High-Efficiency Bifacial Technology

This 445W monocrystalline solar module features advanced bifacial technology, allowing for energy generation from both the front and rear surfaces to maximize power output. Built with a robust double glass construction, it offers superior durability and resistance to harsh environmental factors. It is an ideal solution for residential, commercial, and utility-scale solar installations seeking long-term reliability and enhanced energy yield.

Technical Specifications

Rated Power

445 W

Power Output

Construction Features

- Double Glass Design
- 9 Busbars (9BB)

Cell Technology

Monocrystalline, P-Type, PERC, Bifacial, Half Cell