

40cc Gasoline Chainsaw for Wood Cutting

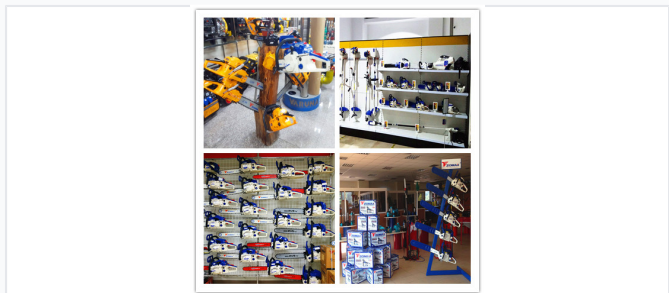
This 40cc gasoline chainsaw is designed for efficient wood cutting tasks. It is suitable for both professional and home use, providing reliable performance for various cutting applications.



ADDITIONAL IMAGES



Product Overview



Professional Performance Chainsaw

This 40cc gasoline-powered chainsaw is engineered for high consistency and reliable wood cutting performance in both professional and garden settings. Featuring a digital-type ignition system for stable operation and an automatic anti-kickback braking system, it balances power with critical safety features. Its robust design is optimized for longevity with a low-vibration architecture, ensuring ease of use during demanding landscaping or tree-trimming tasks.

Technical Specifications

Rated Power

1.5 kW

Rated Power

Engine Details

- 2-stroke air-forced cooled
- Bore: 41mm
- Stroke: 30mm
- Diaphragm carburetor
- Digital-type ignition

Engine Displacement

39.6 cc

Performance Metrics

Operating Speeds

3300 rpm

Idle Speed

11000 rpm

Maximum Speed

Tank Capacities

Fluid Type	Capacity
Fuel Tank	410 ml
Oil Tank	240 ml

Cutting Equipment



Available Cutting Configurations

- Bar Lengths: 14 inch, 16 inch, 18 inch
- Chain Pitch: 0.325 inch or 3/8 inch
- Gauge: 0.050G or 0.058G

Logistics

Shipping Capacity per Container

Container Type	Quantity (Units)
20FT	936
40GP	1944
40HQ	2187

Features

Key Features

Anti-kickback braking, Low vibration, Excellent lubrication, Easy start option, Anti-freeze option