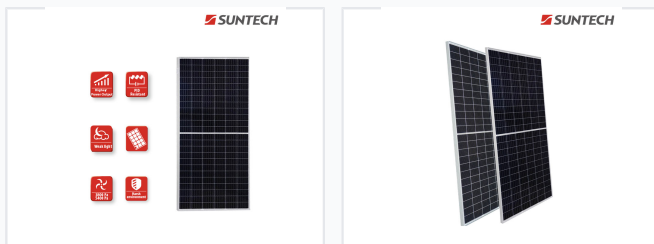


# 400W Monocrystalline Half-Cut Solar Panel

This monocrystalline solar panel provides 400W power output using half-cut cell technology. It is designed for solar systems and offers enhanced power output and reliable operation.



## ADDITIONAL IMAGES



## Overview

### High-Efficiency Monocrystalline Module

This 400W solar module utilizes advanced half-cut cell technology to deliver superior power output and reliability. Designed for versatile applications, it excels in diverse environmental conditions including deserts, farms, and coastal areas due to its robust construction. The 144-cell configuration and high-performance design minimize resistance and power loss, ensuring maximum energy yield over its 25-year performance warranty.

## Electrical Performance

### Maximum Power (Pmax)

**400 W**

Rated Power

**20.4 %**

Module Efficiency

### STC Electrical Data

Parameter	Value
Optimum Operating Voltage (Vmp)	41.8 V
Optimum Operating Current (Imp)	9.57 A
Open Circuit Voltage (Voc)	49.0 V
Short Circuit Current (Isc)	10.47 A

## Mechanical Characteristics

Dimensions	2008 x 1002 x 35 mm
Weight	22.5 kg
Mechanical Load Rating	5400 Pa Front, 3800 Pa Rear

## Technical Features

### Key Technologies

Half-Cut Cell • 9 Busbars • PID Resistant • IP68 Junction Box

Operating Temperature Range

-40°C to +85°C

## Certifications



### Compliance & Standards

- IEC 61215
- IEC 61730
- IEC 61701 (Salt mist)
- DIN EN 60068-2-68 (Sand blowing)
- CE
- VDE