

40-Ton Mining Articulated Dump Truck

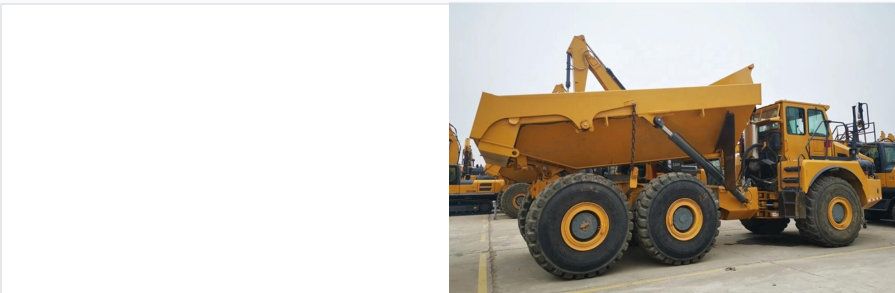
This 40-ton articulated dump truck is designed for heavy-duty mining and construction operations. It features a robust design and powerful engine for efficient material hauling across challenging terrains.



ADDITIONAL IMAGES



Overview



High-Performance Articulated Hauler

This 40-ton articulated dump truck is engineered for demanding mining and large-scale earthmoving operations. It features real-time six-wheel drive and all-terrain self-adaptive technology for superior traction in challenging conditions. The vehicle integrates advanced safety systems, a high-capacity hydraulic dump system, and an ergonomic cab design to ensure maximum operator productivity and comfort.

Technical Specifications



Engine Model	QSB6.7
Rated Power	178 kW
Total Weight	17000 kg
Tire Specification	17.5-25
Front Axle Ground Clearance	586 mm

Performance Metrics



Forward & Reverse Speeds

Direction	Speeds (km/h)
Forward	5, 8, 11, 19, 23, 38
Reverse	5, 11, 23

Maximum Gradeability	25 %
Tractive Effort	88 kN
Working System Pressure	22 MPa