

# 4 Ton Diesel Forklift with Paper Roll Attachment

This 4 ton diesel forklift is designed for efficient material handling in industrial settings. Its paper roll attachment allows for the safe and secure transport of paper rolls and similar cylindrical objects.



## ADDITIONAL IMAGES



## Overview



### High-Efficiency 4-Ton Diesel Forklift

This 4-ton diesel forklift is a radical innovation designed to meet the rigorous demands of modern industrial environments. Featuring a specialized paper roll attachment, it ensures the safe and damage-free transport of cylindrical loads in warehouses and printing facilities. Engineered for high efficiency and energy saving, it combines a robust chassis with advanced hydraulic technology to provide superior operational capacity and security.

## Core Performance



### Key Performance Metrics

**4000 kg**

Rated Capacity

**3000 mm**

Max Lifting Height

**19 km/h**

Travel Speed (Loaded)

**21 %**

Max Gradeability

## Technical Specifications



### Basic Parameters

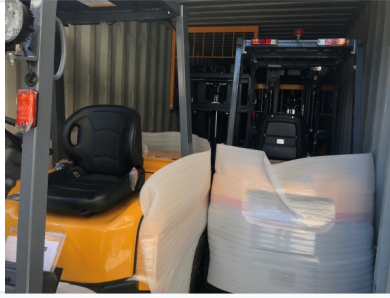
Parameter	Value	Unit
Power Unit	Diesel	-
Operator Type	Driver/Seat	-
Transmission Type	Electronic hydraulic	-
Load Center	500	mm
Turning Radius	2560	mm
Truck Weight	5100	kg
Fuel Tank Capacity	70	L

## Operating Speeds

### Lifting & Lowering Speeds

Action	Loaded	Unloaded	Unit
Lifting Speed	480	520	mm/s
Lowering Speed	480	450	mm/s

## Design & Ergonomics



### Key Design Features

- Removable side cover for easy inspection and repairs
- Integrated control box for fuses and relays
- Aluminum heat sink for enhanced cooling effect
- Large double muffler for superior noise reduction
- New suspension system with adjustable seat to reduce fatigue
- Lowered step height with 1.5x larger step area
- Embedded LCD instrument with neutral start protection
- Double protection type brake lever
- Single chain mast design for enhanced front visibility
- Plastic ceiling for safe operation in rainy conditions

## Dimensions & Tires

### Physical Dimensions

Feature	Dimension
Overall Length (without fork)	2820 mm
Overall Width	1300 mm
Overhead Guard Height	2130 mm
Mast Height (Fork lowered)	2140 mm
Fork Size (LxWxT)	1220x150x50 mm
Front Tire Size	250-15-16PR
Rear Tire Size	6.5-10-10PR

## Compliance & Quality

### Certifications

ISO 9001:2015, CE, EN ISO 12100:2010, EN ISO 3691-5:2014, GB/T 19001-2016