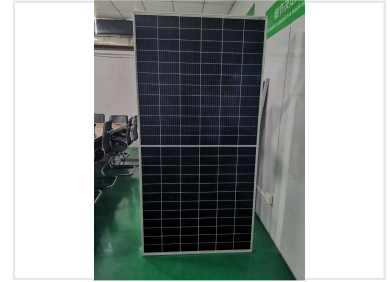


# 395-410W Solar Panel with 9BB Half-Cut Cells

This high-efficiency solar module features 9BB half-cut cell technology and is available in power outputs ranging from 395W to 410W. It is designed for optimal energy generation and durability, ensuring long-term performance.



## ADDITIONAL IMAGES



## Overview

### High-Efficiency Solar Module

This solar module utilizes advanced 9BB half-cut cell technology to deliver enhanced energy generation and superior reliability. Designed for versatility, it is available in power output ranges from 395W to 410W, making it suitable for residential, commercial, and utility-scale solar projects. Built with high-quality materials, this panel ensures consistent performance and durability for long-term energy needs.

## Performance Metrics

### Power Output Range

**395 W**

Minimum Power

**410 W**

Maximum Power

## Technical Specifications

Cell Technology

9BB Half-Cut Cells

## Application

Suitable Applications

Residential, Commercial, Utility-scale