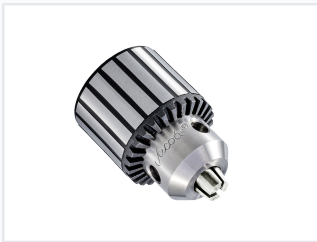


## 3/8-Inch Light Duty Keyed Drill Chuck

This light-duty keyed chuck is designed for power drills and rotating tools. It features a 3/8-inch (10mm) capacity and ensures secure bit retention for various drilling and fastening applications.



### ADDITIONAL IMAGES



### Overview

#### Reliable Light-Duty Keyed Chuck

This 3/8-inch light-duty keyed drill chuck is engineered for portable power tools, offering a balance of precision and durability. Featuring a plain bearing design and center-ground jaws, it ensures optimal straightness and alignment for various drilling tasks. Every unit undergoes a 100% performance and precision inspection to meet high standards for woodworking, metalworking, and general DIY applications.

### Technical Specifications

#### Drilling Capacity

<b>10 mm</b> Maximum Capacity	<b>0.375 in</b> Capacity
----------------------------------	-----------------------------

<b>Mount Type</b>	Threaded
-------------------	----------

<b>Model Reference</b>	41BA
------------------------	------

### Design & Construction

**Tightening Method**  
Keyed • Secure Retention

<b>Bearing Type</b>	Plain Bearing Design
---------------------	----------------------

<b>Jaw Construction</b>	Center-Grind for Straightness and Alignment
-------------------------	---

## Applications

### Ideal Applications

- Woodworking
- Metalworking
- General DIY Projects
- Portable Power Tools

## Quality Assurance

### Quality Control

100% inspected for performance and precision