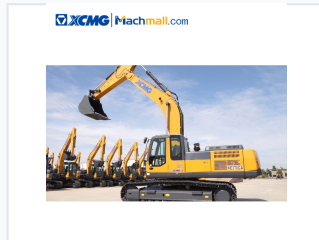


37-Ton Crawler Excavator for Coal Mining

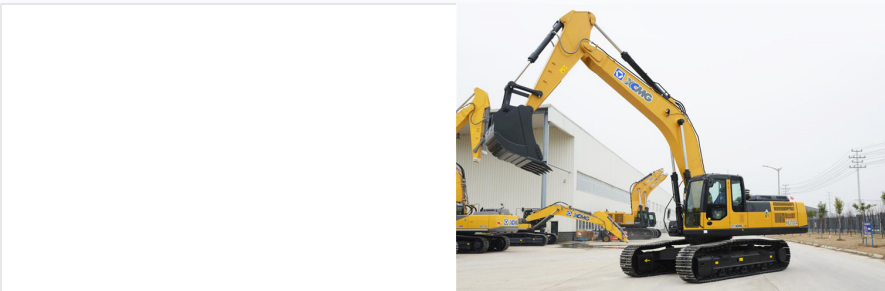
This 37-ton crawler excavator is designed for coal mining and other heavy-duty excavation tasks. It features a powerful engine, advanced hydraulic system, and durable construction for optimal performance and reliability.



ADDITIONAL IMAGES



Overview



A 37-ton crawler excavator built for heavy-duty coal mining and excavation.

High-Performance Mining Excavator

The XE370CA is a robust 37-ton crawler excavator engineered specifically for the rigors of coal mining and heavy-duty earthwork. Designed with an emphasis on high efficiency, energy conservation, and environmental responsibility, this machine excels in harsh construction environments, tunnels, and open-pit mines. It offers professional operators a reliable, multi-functional toolset that drives value through superior power and durable construction.

Technical Features



Detailing the reinforced boom and arm design for high productivity.

Engine System	ISUZU engine with point-type fuel injection technology
Hydraulic Control	Negative flow control system with double-pump confluency
Control Systems	Electronic Power Management, ESS Microcomputer Control, Dynamic Power Balance

Operating Performance



Stable undercarriage design provides maneuverability on uneven mining terrain.

Operating Weight

37 Ton

Operating Weight

Versatile Applications

- Earthwork engineering
- Coal mining
- Tunnel construction
- Crushing operations
- Thumb clamp handling

Operator Experience

Comfort Features

- Ergonomic cabin design
- High-performance silicone oil shock absorbers