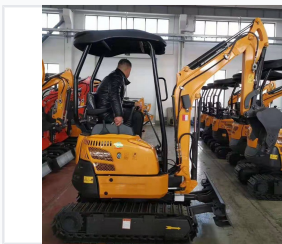


3.5 Ton Mini Crawler Excavator

This 3.5-ton mini crawler excavator is designed for versatile digging and excavation tasks. Its compact design allows for maneuverability in confined spaces, while its robust engine and hydraulic system ensure efficient operation.



ADDITIONAL IMAGES



Overview

Compact Power and Versatility

This 3.5-ton mini crawler excavator is engineered for high performance in confined spaces, featuring a reduced-tail-swing design that enhances maneuverability on tight job sites. Equipped with a reliable diesel engine and precision pilot joystick controls, it offers an optimal balance of power, fuel economy, and operator comfort. The machine supports a wide range of attachments, making it a highly adaptable solution for construction, landscaping, and agricultural tasks.

Performance

Performance Highlights

3 cyl

Engine Cylinders

180 degrees

Service Access

Operating Weight

3.5 ton

Engine & Hydraulics

Emission Standards

EPA Final Tier 4

Engine Type

3-cylinder, 4-cycle, liquid-cooled diesel

Design & Comfort

Cab & Comfort

- ROPS and FOPS structure
- Air-suspension seat
- Wide entryways
- Optional enclosed cab with air conditioner

Maneuverability

Reduced-tail-swing, Adjustable crawlers, Retractable blade

Attachments & Equipment

Compatible Attachments

- Standard bucket
- Hydraulic hammers
- Plate compactors
- Augers
- Grapple
- Ripper