

348cc Adventure Touring Motorcycle

This adventure touring motorcycle features a 348cc, liquid-cooled, single-cylinder engine. It is equipped with a robust chassis and long-travel suspension for varied terrains.



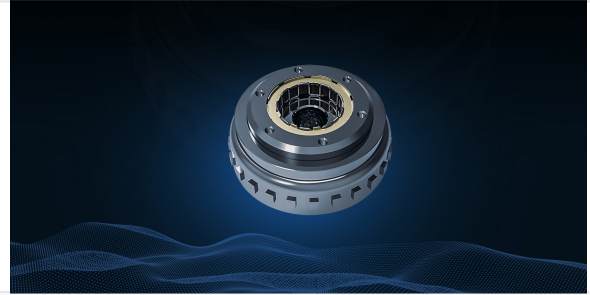
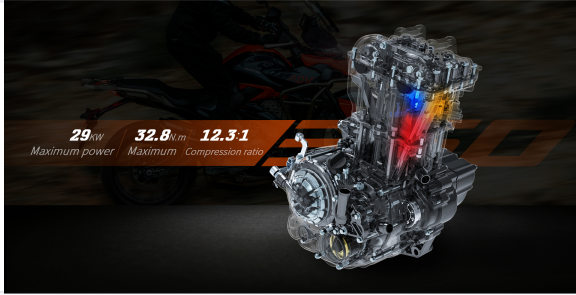
Overview



Adventure Touring Capability

This 348cc adventure touring motorcycle is designed for both on-road and off-road versatility. It features a robust, liquid-cooled single-cylinder engine and a high-strength chassis, providing a reliable and balanced riding experience. With advanced electronic fuel injection, integrated ABS, and comprehensive digital instrumentation, it is engineered for safety, comfort, and performance on long-distance journeys.

Performance



Engine Performance

29 kW

Max Power

32.8 N.m

Max Torque

348 ml

Displacement

12.3 :1

Compression Ratio

Powertrain Specs

- Single cylinder engine
- Double-top camshaft (DOHC)
- Water cooling system
- Fuel injection system (BOSCH)
- Electric ignition
- Oil sealing chain transmission

Dimensions & Weight

Physical Dimensions

Attribute	Value
Length (mm)	2085
Width (mm)	850
Height (mm)	1320
Wheelbase (mm)	1395
Ground Clearance (mm)	150
Seat Height (mm)	795

Weight and Capacity

196 kg

Curb Weight

182 kg

Loading Capacity

19 L

Fuel Tank

Safety & Control



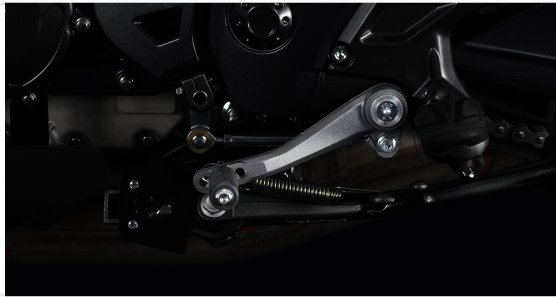
Safety Features

Dual Channel ABS • Tire Pressure Monitoring • LED Lighting • Engine Protection Bars • Handguards

Braking System

Dual disc brakes on front and rear with dual-channel ABS

Wheels & Tires



Tire Specifications

Position	Tire Size	Rim Size
Front	120/70ZR17	MT:3.5x17
Rear	160/60ZR17	MT:4.5x17