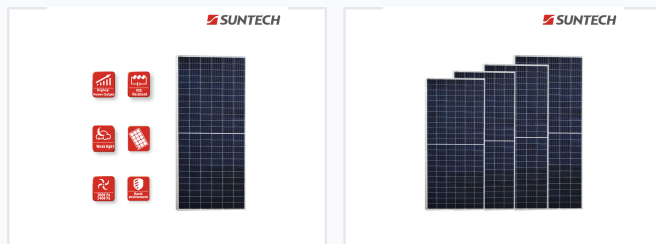


340W Polycrystalline Solar Panel with 144 Cells

This 340W polycrystalline solar panel incorporates 144 solar cells for efficient power generation. It is designed for use in solar systems and solar home applications.



ADDITIONAL IMAGES



Product Overview

High-Efficiency 144-Cell Polycrystalline Solar Module

This 340W-345W polycrystalline solar panel is engineered for optimal performance in diverse environments, from residential solar systems to large-scale deployments. Featuring 144 solar cells, the module is designed to minimize power losses through reduced electrode resistance and superior weak-light sensitivity. With industry-standard durability ratings for static loads and environmental resistance, it ensures reliable long-term energy generation.

Technical Specifications (STC)

Electrical Characteristics (STC)

Parameter	Value
Max Power (Pmax)	340W - 360W
Open Circuit Voltage (Voc)	46.8V
Short Circuit Current (Isc)	9.80A
Module Efficiency	17.9%
Optimum Operating Voltage (Vmp)	38.3V
Optimum Operating Current (Imp)	9.40A

Mechanical Characteristics

Physical Dimensions and Build

- Dimensions: 2008 x 1002 x 35 mm
- Weight: 22.5 kg
- Cell Type: Polycrystalline silicon (158.75 mm)
- Number of Cells: 144 (6 x 24)
- Front Glass: 3.2 mm tempered glass
- Frame: Anodized aluminium alloy
- Junction Box: IP68 rated (3 bypass diodes)

Environmental and Durability

Static Load Capacity

5400 Pa

Front Static Load

3800 Pa

Rear Static Load

Environmental Resilience

PID Resistant, Weak Light Performance, Salt Mist Corrosion Resistant, Ammonia Corrosion Resistant, Sand Blowing Resistant

Warranty and Compliance

Warranty Terms

- 12-year product warranty
- 25-year linear performance warranty
- 97.5% power output in first year
- 80.7% power output at 25th year