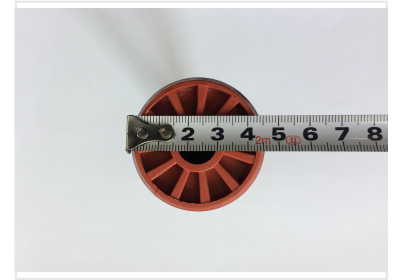
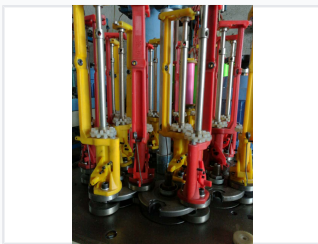


# 33 Spindle High Speed Lace Braiding Machine

This high-speed braiding machine is equipped with 33 spindles for producing lace. It is designed for creating flat RIC-RAC lace, piping tape, jacquard tape, elastic bands, and shoelaces.



## ADDITIONAL IMAGES



## Overview



### High-Speed Lace Braiding Solution

The GH-33 is a high-performance 33-spindle braiding machine specifically engineered for the efficient production of flat RIC-RAC lace, piping tapes, and jacquard tapes. Featuring a dual-head configuration and a maximum speed of 300 RPM, it delivers high-volume output for shoelaces, elastic bands, and decorative fibre bands. The machine is built with precision-machined ductile iron components and an automated yarn cutting device to ensure consistent quality and reduced downtime in professional textile environments.

## Performance Metrics

### Performance Metrics

**300 RPM**

Max Speed

**33**

Carriers per Head

**2**

Production Heads

**1.1 kW**

Motor Power

## Technical Specifications

### Machine & Component Data

Parameter	Value
Machine Size	1400 x 950 x 1700 mm
Bobbin Dimension	48 x 140 mm
Max M.P.H	60 x 2
Voltage Support	220/380 VAC, 50/60Hz

## Applications

### Supported Products

- Flat RIC-RAC Lace
- Piping Tape
- Jacquard Tape
- Elastic Bands
- Fibre Bands
- Various Ropes
- Specialty Bands
- Shoelaces

## Manufacturing & Quality

### Technical Advantages

- Base casting machined after aging treatment for perfect flatness
- Ductile iron 800 panels for high precision and wear resistance
- Core shaft rotor with high-frequency surface treatment and precision grinding
- Spindle base and impeller fit tolerance controlled within 0.03mm
- Rotor nylon pads cast with imported wear-resistant grease

## Operational Features

### Key Features

- Frequency converter for stepless speed adjustment
- Automatic yarn cutting device
- Humanized design for safe and easy operation
- Quick-change spindle structure for fast bobbin replacement
- Direct and convenient maintenance access

## Compliance

### Certifications

CE, ISO