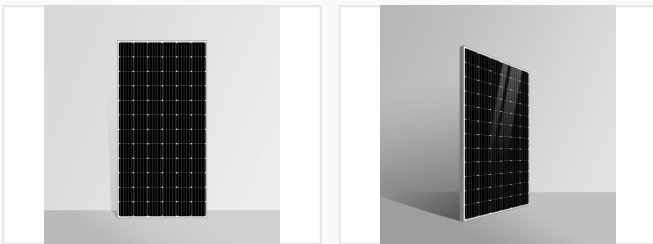


# 320W-390W Monocrystalline Solar Panel

This monocrystalline solar panel contains 72 cells and delivers between 320W and 390W of power. The standard-sized panel is manufactured with mature production techniques and quality control.



## ADDITIONAL IMAGES



## Overview

Advanced 5-busbar technology and half-cell structure for maximum efficiency and durability.

### High-Efficiency 72-Cell Solar Solutions

This series of 72-cell monocrystalline solar panels offers a versatile power range from 320W to 390W, designed for high-performance residential, commercial, and industrial installations. Utilizing advanced 5-busbar technology and a half-cell structure, these modules achieve conversion efficiencies up to 20.37% while maintaining excellent performance in low-light environments. Built for durability, the panels are certified to withstand extreme weather conditions, including high wind and heavy snow loads, ensuring long-term reliability for professional energy projects.

## Key Performance Metrics

### Key Performance Metrics

<b>390 W</b> Max Power Output	<b>20.37 %</b> Max Efficiency	<b>72</b> Cell Count	<b>1500 V</b> System Voltage
----------------------------------	----------------------------------	-------------------------	---------------------------------

## Technical Specifications

The image shows a detailed technical specification sheet for the 72-cell series solar panels. It includes a table of electrical parameters, temperature ratings, and physical dimensions. The table lists models AS350M-72, AS360M-72, AS370M-72, AS380M-72, and AS390M-72 with their respective power, Vmp, Imp, Voc, and Isc values. It also includes a table for temperature ratings and a diagram of the panel's physical dimensions.

Detailed electrical parameters, temperature ratings, and physical dimensions for the 72-cell series.

### Monocrystalline Electrical Parameters

Model	Power (W)	Vmp (V)	Imp (A)	Voc (V)	Isc (A)
AS350M-72	350	37.3	9.39	46.2	9.78
AS360M-72	360	37.8	9.53	46.7	9.88
AS370M-72	370	38.3	9.67	47.3	9.96
AS380M-72	380	38.9	9.77	47.9	10.04
AS390M-72	390	39.5	9.88	48.5	10.11

### Physical Characteristics

Module Dimensions	1956 x 992 x 40 mm
Unit Weight	20.5 kg
Frame Type	High stability aluminum frame

### Environmental & Durability

#### Load Resilience

- Wind Load: 2400 Pascal
- Snow Load: 5400 Pascal
- High Salt Mist Resistance
- Ammonia Resistance

Operating Temperature Range	-40°C to +85°C
-----------------------------	----------------

### Certifications & Warranty

#### Warranty Coverage

- 12-Year Product Workmanship Warranty
- 25-Year Linear Power Warranty

Certifications	TÜV SÜD, CE, SGS, ISO, IEC, UL, PV CYCLE
----------------	--

### Logistics

#### 40'GP Container Loading

- 24 Pallets per container
- 696 Pieces total