

# 32-Meter Concrete Placing Boom

This concrete placing boom has a 32-meter reach and a 3-section boom for flexible operation. Its hydraulic system allows for smooth and controlled movements, ensuring accurate concrete delivery.



## ADDITIONAL IMAGES



## Overview



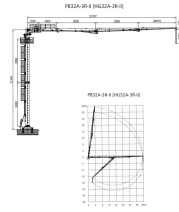
The 3-section articulated boom provides precise concrete delivery for large-scale construction.

### High-Efficiency Concrete Placement

The PB32A-3R-II is a versatile 32-meter hydraulic concrete placing boom designed for precise distribution in high-rise buildings, bridges, and large-scale construction projects. Featuring a 3-section R-type boom configuration, it offers exceptional maneuverability and a full 360-degree slewing range to navigate complex site obstacles. Its modular, lightweight design facilitates easy installation and floor or shaft climbing, significantly reducing labor costs and improving overall project efficiency.

## Key Performance Metrics

构造及工作范围  
STRUCTURE AND SCOPE OF WORK



Detailed diagram showing the horizontal and vertical reach range of the 32-meter placing boom.

### Performance Metrics

**31.7 m**

Max Placing Radius

**21.3 m**

Free-standing Height

**360 °**

Slewing Range

**11 kW**

Motor Power

## Boom Configuration

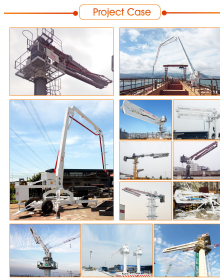
### Boom Section Details

Section	Length (m)	Articulation Range
1st Section	14.5	0° to 86°
2nd Section	9.2	0° to 180°
3rd Section	8	0° to 180°

## Technical Specifications

Hydraulic System Pressure	28 MPa
Total Machine Weight	18150 kg
Delivery Pipeline Diameter	1133x 4.5 mm
Operating Temperature Range	-20°C to 55°C

## Features & Options



Real-world application showing the boom's maneuverability on a high-rise construction site.

### Climbing Modes

- Floor climbing
- Shaft climbing

### Design Advantages

- Integrated hydraulic pump station and electric cabinet
- No balance arm for flexible slewing
- Lightweight design for floor loading safety
- Customizable column lengths (4M, 5M, 6M, 10M)
- Push-in hydraulic connectors for easy maintenance

### Control Systems

HBC Remote Control, AUTECH Remote Control, Electric Proportional Control, Radio Remote Control, Cable Remote Control

## Compliance

### Quality Standards

ISO 9001:2015 • ISO 14001 • OHSMS 18001 • CE Certified • 2014/35/EU