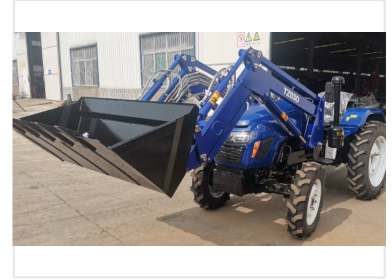


30 HP 4WD Farm Tractor with Front End Loader

This tractor features a front end loader and a direct injection, water-cooled 4-stroke engine. The gearbox uses an 8F+2R shuttle shift.



Overview



A versatile 30 HP 4WD tractor designed for heavy-duty material handling and farming tasks.

Versatile Agricultural Performance

This 30 HP 4WD tractor is engineered for high-efficiency agricultural and landscaping tasks. Featuring a robust front-end loader, it provides excellent material handling capabilities including lifting, digging, and transport. Its compact design ensures superior maneuverability in tight working spaces, while the reliable 4-stroke water-cooled engine delivers consistent power for demanding environments.

Engine & Performance

Engine Specifications

22.06 kW
Rated Power

2300 r/min
Rated Speed

4 count
Cylinders

Fuel Tank Capacity

25 L

Transmission & Controls

Transmission

8F+2R Shuttle Shift

Clutch System

Single disc, dry, single-function

Dimensions & Physical

Dimensions (L x W x H)

3250 x 1550 x 2240 mm

Dry Mass (with ROPS)

1620 kg

Working Attachments

PTO Speed

540 / 720 rpm

Linkage

Rear Mount 3-point Linkage (Category I)