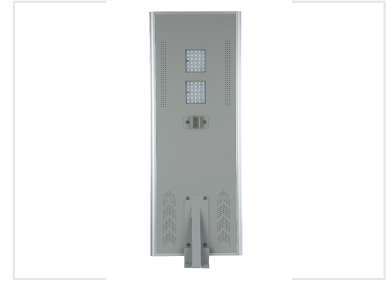


# 30-60W Solar Street Light

This solar street light provides 30-60W of lighting power. Its durable construction ensures long-lasting performance in various weather conditions.



## ADDITIONAL IMAGES



## Product Overview

### Efficient Outdoor Illumination

This high-efficiency solar street light is designed for reliable outdoor illumination in various environments. It features an integrated solar panel, LED lamp, and a high-capacity lithium battery to ensure autonomous operation. The robust aluminum alloy construction offers durability against harsh weather, making it an ideal energy-saving solution for streets, pathways, and parking lots.

## Technical Specifications

### Lighting Power

**60 W**

Maximum Power Output

**30 W**

Minimum Power Output

### Core Features

- Autonomous charging and illumination
- Integrated intelligent power management
- Adjustable brightness settings
- Integrated timer functionality
- Weather-resistant construction

### Body Material

Aluminum alloy

## Applications

### Recommended Use Cases

Public Streets, Pedestrian Pathways, Parking Lots, Outdoor Areas