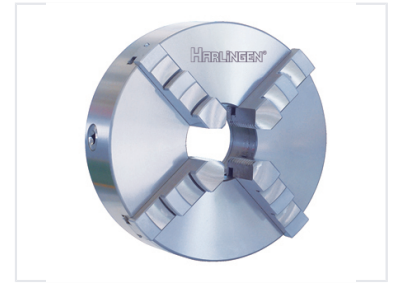


3-Jaw Self-Centering Chuck

This 3-jaw self-centering chuck is designed for secure and accurate workpiece holding. It features hardened and ground jaws for durability and consistent performance on lathes, milling machines, and other rotary equipment.



ADDITIONAL IMAGES



Overview

Precision Workholding Excellence

This 3-jaw self-centering chuck is engineered for high-precision machining applications, offering a concentricity of $d\ 0.05\text{ mm}$ for accurate workpiece alignment. Constructed from wear-resisting semi-steel with a hardness of up to HB220, it ensures a long service life and consistent performance under demanding conditions. Its short cylindrical center mounting design allows for versatile integration with lathes, milling machines, and other rotary equipment.

Technical Performance

Concentricity

0.05 mm

Max Runout

Material & Durability

| | |
|-----------------|---|
| Body Material | Wear-resisting semi-steel (Alloy cast iron) |
| Hardness Rating | Up to HB220 |

Design Features

Key Advantages

- High-quality steel construction for maximum rigidity
- Hardened and ground jaws for extended service life
- Quick and repeatable workpiece clamping
- Minimal runout for demanding machining tasks

| | |
|--------------------------|-----------------------------------|
| Mounting Style | Short cylindrical center mounting |
| Jaw Configuration | 3-Jaw Self-Centering |

Applications

| | |
|-----------------------------|--|
| Compatible Equipment | Lathes, Milling Machines, Grinders, Rotary Equipment |
|-----------------------------|--|