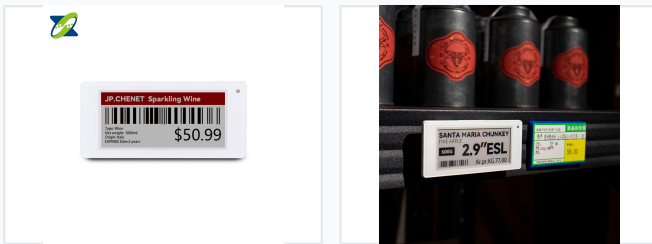


2.9-Inch Wi-Fi E Ink Electronic Shelf Label

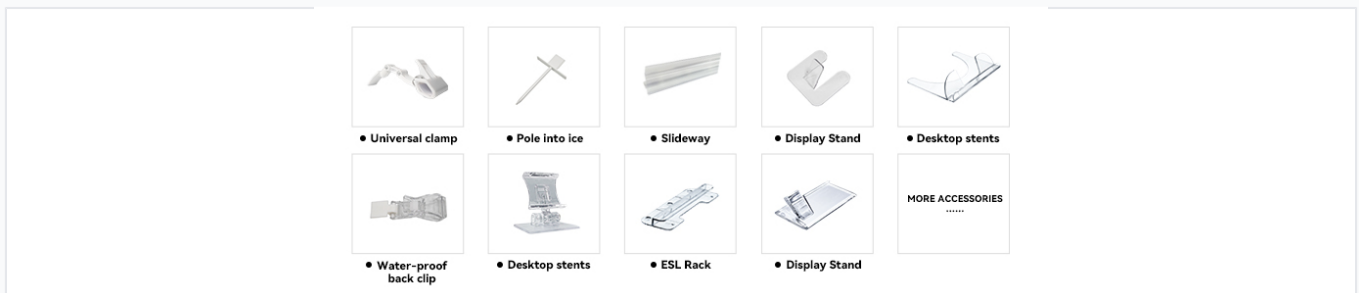
This 2.9-inch electronic shelf label features an E Ink display for clear visibility and low power consumption. It supports wireless updates via Wi-Fi, enabling real-time price adjustments and product information display.



ADDITIONAL IMAGES



Overview

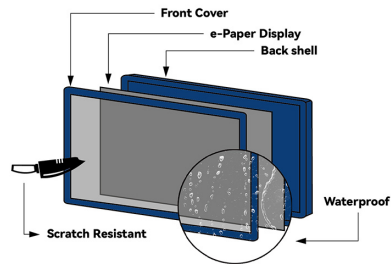


Various mounting options including universal clamps, stands, and waterproof back clips.

Smart Retail Electronic Shelf Labels

These 2.9-inch E-Ink electronic shelf labels provide a high-efficiency solution for modern retail environments. By leveraging wireless 2.4GHz technology, these units allow for real-time, centralized pricing and product information updates across multiple locations. Designed to improve operational efficiency, they help reduce manual labor costs, eliminate pricing errors, and support sustainable retail practices by minimizing paper waste.

Display Specifications



Physical construction components including front cover, E-Ink display, and back shell.

| | |
|--------------------|-----------------------------------|
| Display Technology | Dot-matrix E-Ink Electronic Paper |
| Screen Size | 2.9 inch |

Technical Features



Key physical durability features including waterproofing and scratch resistance.

Durability

Waterproof • 4H Scratch Resistant • All-Terrain

Performance Highlights

40 °C

Operating Temp Above

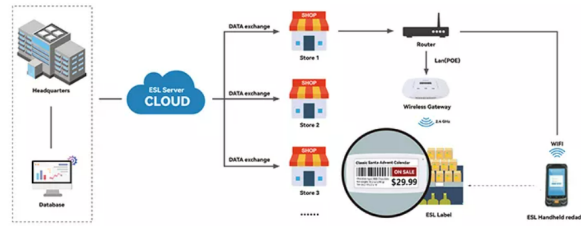
180 degrees

Viewable Angle

| | |
|-----------------------|-------------------------------|
| Wireless Connectivity | 2.4GHz WiFi, NFC, BLE, 433MHz |
|-----------------------|-------------------------------|

System Integration

How Does ESL Work?



System architecture showing connectivity from cloud database to wireless gateways and labels.

Management Software

- Template design tool
- Local e-retail version
- Cloud-based e-retail version
- SDK integration support

System Components

| Component | Function |
|--------------------|---------------------------------|
| Wireless Gateway | Central communication hub |
| Handheld Reader | On-floor inventory management |
| Cloud/Local Server | Database & data synchronization |