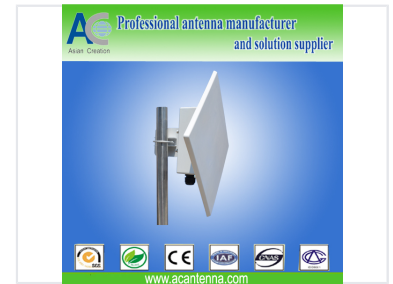


2.4GHz Dual Polarization Panel Antenna

This panel antenna is designed for 2.4G communication systems and supports IEEE802.11a. It is suitable for point-to-point and point-to-multipoint applications.



Overview

High-Performance Dual Polarization Antenna

This 2.4GHz dual polarization panel antenna is engineered for reliable wireless communication in demanding environments. With a high gain of 21dBi and a robust, weather-resistant design, it provides exceptional signal transmission and reception capabilities. It is an ideal solution for extending wireless network coverage and ensuring stable connectivity across various professional applications.

Electrical Specifications

Gain

21 dBi

Gain

Beam Width

Plane	Width
Horizontal	12°
Vertical	9°

Frequency Range	2400-2500 MHz
VSWR	1.5 max
Maximum Input Power	100 W
Connector Type	N female

Mechanical Specifications

Antenna Dimensions	450 x 450 mm
Weight	3.6 kg
Rated Wind Velocity	241 km/h
Mounting Mast Diameter	Ø30 - Ø50 mm

Environmental

Operating Temperature	-40°C to +80°C
-----------------------	----------------

Compliance

Certifications	CE, SGS, IAF, CNAS
----------------	--------------------