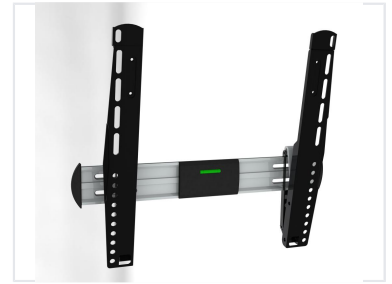


23-42 inch Tilting TV Wall Mount Bracket

VESA 400x400

This TV wall mounting bracket is designed for 23 to 42 inch televisions. It supports a maximum VESA mounting pattern of 400x400mm and features a tilting mechanism.



Overview

Professional Tilting TV Wall Mount

This ultra-slim tilting wall mount is engineered for screens ranging from 23 to 42 inches, offering a robust solution for professional installations. Constructed from high-gauge cold-rolled steel and aluminum, it supports loads up to 30 kg while maintaining a low profile of just 25mm from the wall. The tool-less tilt mechanism and integrated safety features ensure a secure and user-friendly experience for various commercial and residential environments.

Key Performance Metrics

Key Performance Metrics

30 kg

Max Load Capacity

400 x400mm

Max VESA

25 mm

Wall Distance

Technical Specifications

Screen Size Compatibility	23"-42"
Tilt Range	-15° / +0°
Material	High gauge cold rolled steel and aluminum

Features

Product Features

- Tool-less tilt adjustment
- Ultra-slim low profile design
- Integrated safety lock
- Built-in bubble level for precise installation
- Adjustable arm length
- Universal hardware pack included

Design & Finish

Available Finishes	Powder Coat Black, Powder Coat Silver
--------------------	---------------------------------------

Logistics & Packaging

Packaging Details

Metric	Value
Carton Quantity	5 pcs
Carton Dimensions	50 x 23.5 x 26.5 cm
Net Weight (NW)	6.4 kgs
Gross Weight (GW)	8.1 kgs
Packaging Type	Neutral gift box

Container Loading Capacity

Container Size	Quantity (Pieces)	Quantity (Cartons)
20' GP	4505 pcs	901 ctns
40' GP	9025 pcs	1805 ctns