

## 22.5" Truck Brake Caliper

This is a 22.5" brake caliper designed for use on heavy-duty trucks, buses, and trailers. It is IATF 16949 certified.



### ADDITIONAL IMAGES



### Product Overview



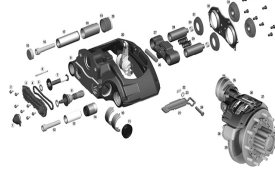
New 22.5 inch air disc brake caliper assembly for heavy-duty vehicles.

### High-Performance Air Disc Brake Caliper

This 22.5" air disc brake caliper is engineered for heavy-duty applications, including trucks, buses, and trailers. Manufactured with precision, it features core components produced in-house and undergoes rigorous automated assembly and 100% online testing to ensure optimal safety and reliability. It is a fully new product designed to meet international automotive quality standards.

## Technical Specifications

### APPLICATIONS



1. Caliper	11. Piston Pin	11. Piston Pin	11. Piston Pin
2. Caliper Body	12. Piston Seal	12. Piston Seal	12. Piston Seal
3. Piston	13. Piston Seal	13. Piston Seal	13. Piston Seal
4. Piston Pin	14. Piston Seal	14. Piston Seal	14. Piston Seal
5. Piston Pin	15. Piston Seal	15. Piston Seal	15. Piston Seal
6. Piston Pin	16. Piston Seal	16. Piston Seal	16. Piston Seal
7. Piston Pin	17. Piston Seal	17. Piston Seal	17. Piston Seal
8. Piston Pin	18. Piston Seal	18. Piston Seal	18. Piston Seal
9. Piston Pin	19. Piston Seal	19. Piston Seal	19. Piston Seal
10. Piston Pin	20. Piston Seal	20. Piston Seal	20. Piston Seal

Detailed component breakdown showing the assembly structure of the brake caliper.

### Quality Certification

IATF 16949

### Compatible Vehicles

Truck, Bus, Trailer

### OEM Reference

K002962

## Logistics & Packaging

### PACKAGING&SHIPPING



Professional packaging options including palletized and boxed shipping.

### Packaging Methods

- Neutral packaging
- Plastic bag
- Box
- Carton
- Pallet
- Customized packaging

## Quality Assurance



Precision testing equipment used for brake performance and life cycle validation.

## Performance Testing

**100 %**

Online Test Coverage