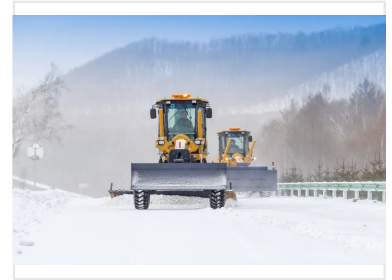


# 215 HP Motor Grader for Leveling and Ditching

This motor grader is used for large ground surface leveling, ditching, and slope scraping. It is necessary engineering machinery for road construction, water conservancy, and farmland improvement.



## ADDITIONAL IMAGES



## Overview



Heavy-duty 215 HP motor grader designed for road maintenance and leveling.

### High-Performance 215 HP Motor Grader

This 215 HP motor grader is designed for professional ground surface leveling, ditching, slope scraping, and snow removal. It offers excellent performance for highway, airport, and farmland infrastructure projects. Built with a robust frame and advanced hydraulic system, this machine ensures precise blade control, reliable operation, and operator comfort in demanding environments.

## Basic Parameters

Engine Model	6CTA8.3-C215
Rated Power	160 kW
Rated Speed	2200 rpm
Total Weight	16500 kg
Overall Dimensions (L x W x H)	8970 x 2625 x 3420 mm
Tire Specification	17.5-25

## Performance

### Tractive Effort

**87 kN**

Tractive Effort

Forward Speeds	5, 8, 11, 19, 23, 38 km/h
Reverse Speeds	5, 11, 23 km/h
Maximum Gradeability	20 %

## Features



Equipped with an ergonomic cabin and precise hydraulic controls for operator efficiency.

Key Advantages	Vibration Elimination, Sound Insulation, Dual-Circuit Hydraulic Brakes, Ergonomic Cab
----------------	---