

# 21-Meter Concrete Placing Boom with Three-Section Arm

This concrete placing boom features a three-section articulated arm, providing a reach of 21 meters. Its hydraulic system allows for smooth and controlled movements, enhancing productivity and minimizing material waste.



## Overview



The PB21B-3R features a compact, mobile design suitable for diverse construction environments.

## High-Efficiency 21-Meter Concrete Placing Boom

The PB21B-3R is a mobile hydraulic concrete placing machine designed for precision and efficiency in high-rise, bridge, and infrastructure projects. Featuring a three-section 'R' folding articulated arm with a 21-meter reach, it ensures consistent delivery while minimizing material waste. Its lightweight, balance-arm-free design allows for flexible 360° rotation and easy relocation on-site via tower crane.

## Key Performance Metrics

### Technical Highlights

**21 m**

Max Placing Radius

**360 °**

Slewing Range

**7.5 kW**

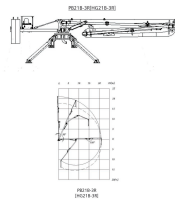
Motor Power

**28 MPa**

System Pressure

## Boom Structure

构造及工作范围  
STRUCTURE AND SCOPE OF WORK

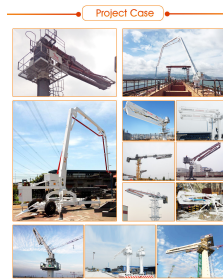


Detailed diagram illustrating the vertical and horizontal reach capabilities of the three-section arm.

## Boom Section Details

Section	Length (m)	Articulation Range
1st Section	8.4	0° to 90°
2nd Section	6.9	0° to 180°
3rd Section	5.7	0° to 180°

## Technical Specifications



Real-world application showing the boom's stability and reach on a job site.

## Physical & Operational Data

- Free Standing Height: 3m
- Total Weight: 9150 kg
- Max Lifting Unit: 5850 kg
- Delivery Pipeline Diameter:  $\varnothing$ 133x 4.5 mm
- Delivery Hose Diameter: 5" x 3000 mm
- Operating Temperature: -20°C to 55°C
- Power Supply: 380V/50Hz (Customizable)
- Slewing Mode: Gear Slewing

## Control & Features



Robust hydraulic system and multi-section boom arm for precise concrete distribution.

### Operational Features

Radio Remote Control, Cable Remote Control, Fully Hydraulic Drive, Inclined Outrigger Structure, No Balance Arm Design, Integrated Pump Station

## Optional Configurations

### Customizable Options

- Custom Column Lengths: 4M, 5M, 6M, 10M
- Climbing Modes: Floor climbing or Shaft climbing
- Remote Brands: HBC or AUTEC
- Control Components: Omron/Schneider electrical components
- Valves: Electric proportional control or Slewing cushion valves
- Connectors: Push-in connectors and imported hydraulic hoses

## Compliance

### Quality Standards

ISO 9001:2015 • CE Certified • ISO 14001 • OHSMS 18000