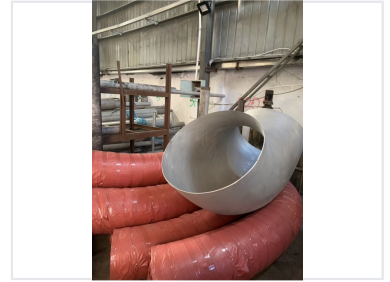


# 20 inch TP304 Stainless Steel Butt-Weld Elbow

This elbow is constructed from TP304 stainless steel. It is designed for use in industrial piping systems requiring corrosion resistance and smooth flow transitions.



## Product Overview

### Industrial Grade 304 Stainless Steel Elbow

This 20-inch 90-degree butt-weld elbow is engineered from high-quality TP304 stainless steel, offering superior corrosion resistance for demanding industrial environments. Manufactured according to ASTM A403 and ASME B16.9 standards, this long-radius (R=1.5D) component ensures smooth flow transitions within piping systems. Supplied in an annealed and pickled condition with beveled ends, it is ready for immediate, reliable installation.

## Technical Specifications

Material Grade	TP304 Stainless Steel
Nominal Size	20 inch
Bend Angle	90 degrees
Radius Type	Long Radius (R=1.5D)

## Manufacturing Details

<b>Construction</b> Welded • Wrought from Plate	
Compliance Standards	ASTM A403, ASME B16.9
Delivery Condition	Annealed and Pickled

## Installation and Packaging

Connection Type	Butt Weld with Beveled Ends
Packaging Type	Plywood case