

2-Position Push Button Switch with Handle Return Spring

This 2-position push button switch features a handle return spring mechanism. It is designed for electrical power applications, providing reliable control with a spring-return function after actuation.



ADDITIONAL IMAGES

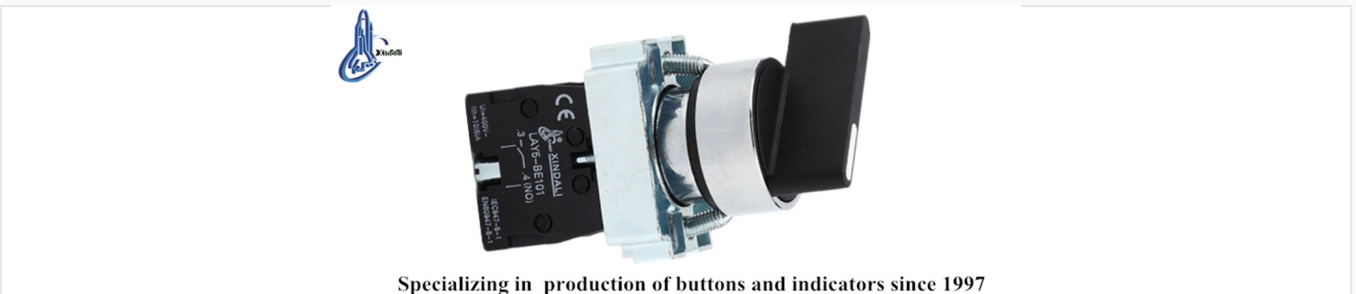


Product Overview

Industrial Control Switch

This 2-position rotary selector switch features a robust handle return spring mechanism designed for reliable electrical circuit control. Built with high-grade anti-flame plastic and zinc alloy, it ensures durability in demanding industrial environments. The switch is engineered for versatility, supporting AC voltage up to 660V and DC voltage below 400V, making it ideal for controlling signals, interlocking, and various electrical appliance circuits.

Technical Specifications



Specializing in production of buttons and indicators since 1997

Detailed view of the switch mechanism and contact block assembly.

Rated Insulation Voltage	600 V
Conventional Heating Current	10 A
Insulation Resistance	e5M©
Contact Resistance	d25©
Power Frequency Withstand Voltage	AC 2.5KV/min

Performance Metrics

Mechanical Life

1000000 cycles

Pushbutton

500000 cycles

Selector Switch

Electrical Life

5000000 cycles

Pushbutton

250000 cycles

Selector Switch

Dimensions & Mounting



LAY5-BJ21

Long handle

N/O



2 Position stay put

LAY5-BJ21

2 Position spring return

LAY5-BJ41

N/O+N/C

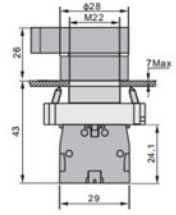


2 Position stay put

LAY5-BJ25

2 Position spring return

LAY5-BJ45



Dimensional drawing and configuration guide for the long handle selector switch series.

Mounting Specifications

Parameter	Value
Mounting Hole	M22
Outer Diameter	28mm
Max Panel Thickness	7mm
Total Height	43mm
Handle Height	26mm

Certifications

Certifications & Standards

CE, ISO 9001, RoHS, UL, IEC60947-5-1, GB/T14048.1