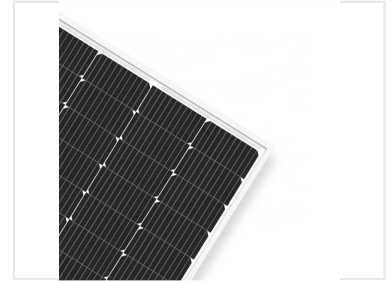
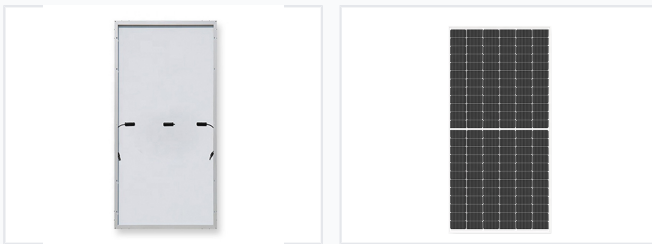


182mm Half-Cut Cell Monocrystalline Solar Panel

This high-efficiency monocrystalline solar panel uses multi-busbar (MBB) technology with 182mm half-cut cells. It is designed for optimal energy conversion and lasting durability.



ADDITIONAL IMAGES



Product Overview

Advanced 182mm Half-Cut Technology

This high-efficiency monocrystalline solar panel utilizes advanced half-cut cell technology, where cells are precisely divided by infrared laser to halve working current. This series-parallel design significantly reduces electrical transmission losses and operating temperatures. The result is a more reliable panel with superior shading tolerance, ensuring 50% power output even during partial shading conditions at sunrise or sunset.

Technical Advantages

Key Performance Benefits

- Lower Hot Spot Temperature for improved safety
- Reduced Operating Temperature to minimize transmission loss
- Enhanced Shading Tolerance for consistent power output
- Optimized for residential and commercial roof installations

Cell Technology

Monocrystalline • Half-Cut Cell • Multi-Busbar (MBB)

Physical Construction

Cell Size	182 mm
Design Features	Robust Frame, High-Transparency Glass, Advanced Interconnection

Applications

Suitable Applications	Residential, Commercial, Utility-Scale
-----------------------	--