

# 160A Low Voltage High Breaking Capacity Fuse

This fuse is designed for AC 50Hz circuits with voltage up to 1140V and current to 1250A. It protects electrical installations from overload and short circuits, and can also protect semiconductor devices and electric motors from short-circuits.



## ADDITIONAL IMAGES

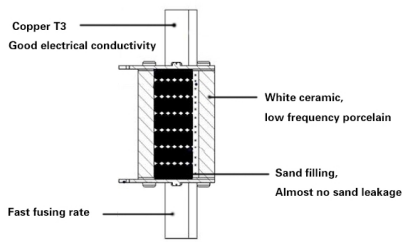


## Overview

### High-Performance Circuit Protection

This series of low-voltage, high-breaking-capacity fuses is engineered for reliable protection in industrial and commercial electrical installations. Designed for versatility, they effectively safeguard circuits against overloads and short circuits while offering specialized protection for semiconductor devices and electric motors. With a robust ceramic body and high-conductivity copper terminals, these fuses ensure rapid fault interruption and long-term operational safety.

## Technical Specifications



High-conductivity copper T3 terminals and low-frequency porcelain insulation for superior arc quenching.

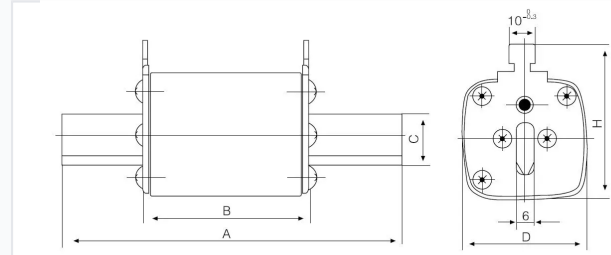


Fig1.2

Precision engineering diagram showing mounting dimensions and clearance requirements.

### Protection Classes

gG/GL (General Purpose) • aR (Semiconductor) • aM (Motor)

### Construction Materials

- Low-frequency porcelain ceramic body
- Copper T3 terminals
- Arc-quenching sand filling

### Rated Voltage

1140 V

### Rated Breaking Capacity

120 kA

### Compliance Standards

IEC 60269, GB13539, CE

## Model Variants



Available in multiple sizes (NH00 to NH3) to accommodate diverse industrial current requirements.

### Size and Rating Matrix

Size	Rated Voltage	Current Range	Weight
NH00	500V	63A-160A	175
NH1	500V	63A-250A	455
NH2	500V	80A-400A	580
NH3	500V	160A-630A	880