

16-Ton Diesel Forklift Truck

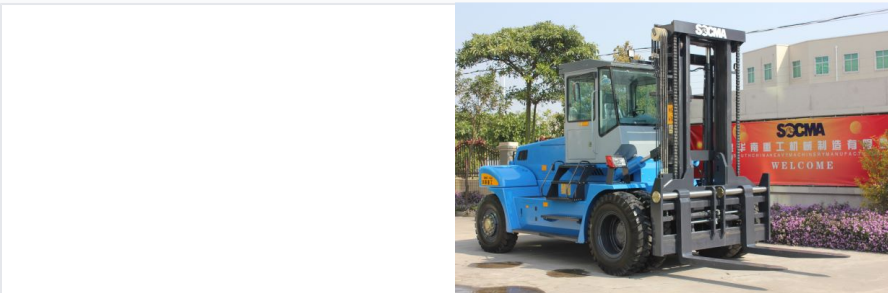
This 16-ton diesel forklift truck is built for heavy lifting operations in industrial settings. It features a durable diesel engine that delivers reliable performance and high torque for efficient material handling.



ADDITIONAL IMAGES



Product Overview



Heavy-Duty 16-Ton Diesel Forklift

This 16-ton diesel forklift is engineered for demanding industrial applications, featuring a high-quality turbocharged engine that balances strong power performance with energy conservation. The vehicle is built on a robust, 3D finite element analyzed box-type frame to ensure maximum longitudinal and transverse stability during heavy-duty cycles. Designed with operator efficiency in mind, it includes a full-hydraulic steering system, pilot valve controls, and a pressurized cab equipped with air conditioning and heating for all-weather operation.

Core Performance



Key Performance Indicators

16 t

Rated Load

900 mm

Load Center

3500 mm

Standard Lift Height

5800 mm

Min. Turning Radius

Engine & Powertrain

Engine Specifications

Feature	Specification
Engine Type	Turbocharged, 6-Cylinder
Rated Power	129KW / 142KW @ 2200rpm
Displacement	6.494L / 6.7L
Transmission	Imported technology, smooth torque converter
Gears	2 Front / 1 Rear

Operational Capabilities



Speed & Gradeability

Metric	With Load	Without Load
Travel Speed	26 km/h	30 km/h
Lifting Speed	250 mm/s	260 mm/s
Lowering Speed	430 mm/s	330 mm/s
Gradeability	20%	21%

Chassis & Build



Chassis & Build

- Firm box-type frame with 3D finite element analysis
- Transverse oil cylinder type steering bridge
- Full-hydraulic steering for flexible operation
- Independent transmission and hydraulic oil cooling systems
- Hydraulic clamp disc brakes for stable thermostability
- Nondestructive testing on main welding parts

Dimensions

Physical Dimensions

Dimension Type	Value
Overall Length (with forks)	7640 mm
Overall Width	2750 mm
Height to Cab	3365 mm
Wheelbase	3800 mm
Fork Dimensions	1800 x 220 x 100 mm
Min. Ground Clearance (Mast)	265 mm

Operator Comfort

Cabin & Control	Full Enclosed Cab, Air Conditioning, Heater, Rear View Display, Pilot Valve Control, Hydraulic Fork Positioner
-----------------	--

Tires

Tire Configuration	Front: 12.00-24-18PR (4 wheels) / Rear: 12.00-20-18PR (2 wheels)
--------------------	--

Compliance

Standards & Compliance

ISO 9001:2015 • CE Certified • Special Equipment License