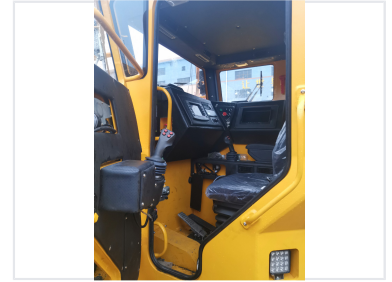


14-Metric Ton Underground Wheel Loader

This underground wheel loader has a 14-metric ton capacity. It is designed for heavy-duty performance in confined spaces.



ADDITIONAL IMAGES



Overview

High-Capacity Underground Performance

The WJ-6 underground wheel loader is a heavy-duty machine engineered for efficient material handling in mining tunnels measuring at least 3.5m by 3.5m. With a 14-metric ton loading capacity and a powerful 256 kW diesel engine, it delivers high performance in confined underground environments. The unit integrates premium international components to ensure reliability, ease of maintenance, and high operational uptime for demanding mining applications.

Key Performance Metrics

Performance Highlights

14 Metric Ton

Loading Capacity

6 m³

Bucket Volume

350 kN

Max Shovel Force

Technical Specifications

Machine Dimensions

Dimension	Measurement
Length	10600
Width	2866
Height	2500

Engine Power	256 kW
--------------	--------

Certifications

Certifications & Standards	CE, QS9001, CA
----------------------------	----------------

Options

Available Upgrades

- Sealed cabin with heater and AC
- Automatic central lubrication
- Automatic & Manual fire suppression
- Radio & Video system
- Travel Aid system
- Remote control system