

# 10.24 KWH LiFePO4 Battery Pack

This LiFePO4 battery pack has a rated capacity of 10.24KWH at 25.6V/51.2Vdc. It features an intelligent BMS with automatic calibration and active balancing technology.



## ADDITIONAL IMAGES



## Overview

### High-Capacity Energy Storage Solution

This 10.24 KWH LiFePO4 battery pack is a robust energy storage solution designed for high-demand B2B applications, including home energy storage, communication stations, and industrial backup. Available in 25.6V/400Ah and 51.2V/200Ah configurations, it features 32 internal 100Ah cells managed by an intelligent BMS with active balancing technology. With a cycle life of at least 3500 cycles at 80% DOD, it provides long-term reliability for off-grid and solar photovoltaic systems.

## Key Performance Metrics

### Key Performance Metrics

**10.24 KWH**

Rated Capacity

**3500 cycles**

Cycle Life (80% DOD)

**32 pcs**

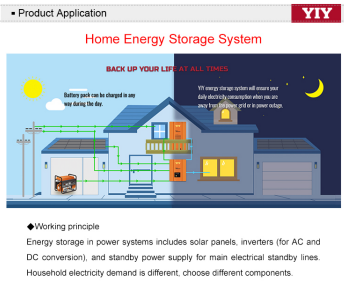
Internal Cells

## Technical Specifications

### Model Comparison

Parameter	LFP24400H	LFP48200H
Rated Voltage	25.6V	51.2V
Rated Capacity	400Ah	200Ah
Cell Configuration	8S4P	16S2P
Max Charge Voltage	28.4±0.2V	56.8±0.4V
Output Voltage Range	20~28Vdc	40~56Vdc
Rated Discharge Current	400A	200A

## Applications



Working principle of the home energy storage system integrated with solar panels and inverters.



Complete system setup showing battery pack connectivity with PV panels, grid, and household appliances.

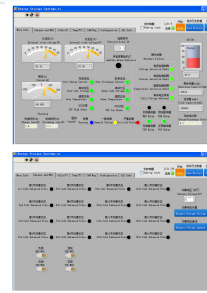
### Primary Applications

- Solar/Photovoltaic energy storage
- Home energy storage systems (ESS)
- Communication base stations
- Data center backup power
- Commercial and industrial backup
- Marine and RV independent power supply

## Battery Management & Safety



Real-time monitoring software showing individual cell voltages and system protection parameters.

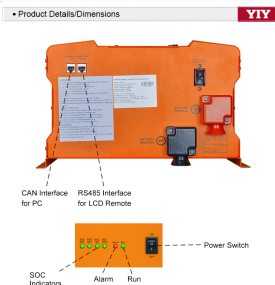


User interface displaying SOC, current, and relay status for comprehensive system diagnostics.

### BMS & Safety Features

Intelligent BMS, Active Balancing, Overcharge Protection, Over-discharge Protection, Temperature Monitoring, Automatic Calibration

## Connectivity & Interface



Detailed view of the communication ports (CAN/RS485), SOC indicators, and DC circuit breaker.

### Communication Interfaces

- CAN Port (PC control and monitoring)
- RS485 Port (LCD remote connection)
- Master & Slave parallel support
- Mobile APP monitoring (Optional)

## Physical & Environmental

IP Protection

IP31

Charging Temp Range

0~45°C

Discharging Temp Range

-20~60°C

Dimensions (H\*W\*D)

850 \* 550 \* 187 mm

Net Weight

100 kg

## Compliance

Certifications

CE, TUV, UN38.3, MSDS