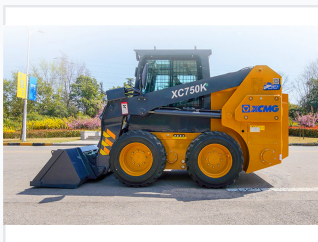


# 1-Ton Mini Skid Steer Loader

This 1-ton mini skid steer loader is a compact machine designed for versatile performance. It features a robust hydraulic system and is suitable for various applications.



## ADDITIONAL IMAGES



## Overview

### Versatile 1-Ton Mini Skid Steer Loader

This medium-sized skid steer loader is engineered for high efficiency and energy conservation across diverse working conditions. Designed with a robust frame and advanced hydraulic systems, it excels in tasks ranging from agricultural manure clearing and pasture stacking to road cleaning and snow removal. The machine features a powerful engine and a two-speed transmission, ensuring rapid site transfer and responsive performance even in emergency scenarios.

## Performance & Engine

### Engine Specifications

**67 HP**

Rated Power

**50 kW**

Rated Power

**2300 rpm**

Rated Speed

Maximum Travel Speed

18 km/h

Emission Standard

Chinese-III

## Features & Capabilities

### Key Features

Two-speed walking configuration • Pressurized cab • Fresh air conditioning • Large flow hydraulic system • Hydrostatic drive

### Compatible Attachments

- Inclined sweeper
- Snow plough
- Rotary tiller
- Closed sweeper
- Planer
- Manhole cover planer
- Breaking hammer
- Twist drill
- Continuous ditcher