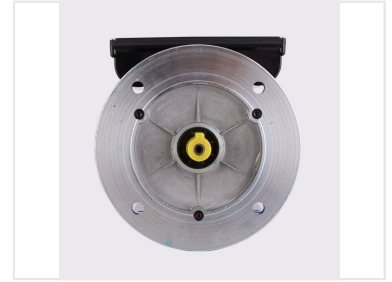
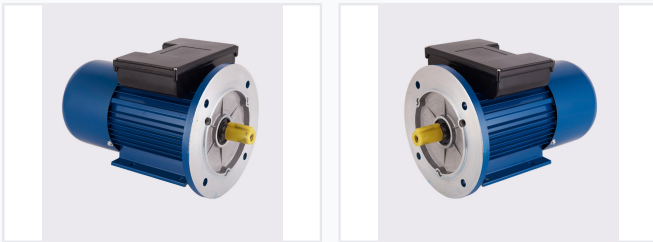


# 1 HP Single-Phase Electric Motor

This single-phase electric motor adheres to international standards, ensuring stable operation and easy maintenance. It is commonly used in agricultural machinery and other applications requiring reliable rotational power.



## ADDITIONAL IMAGES



## Product Overview

### High-Efficiency Electric Motor

This 1 HP single-phase electric motor is engineered for reliable rotational power in a wide range of industrial and mechanical applications, including pumps, fans, and compressors. Featuring a robust, finned housing for optimized heat dissipation and 100% copper windings, the motor ensures long-lasting performance and efficiency. It is designed for easy installation via integrated flange mounts and a keyed shaft, making it a versatile choice for modern machinery.

## Technical Specifications

Rated Power	1 HP
Winding Material	100% Copper

## Compliance & Quality

### Efficiency Standards

IE1 • IE2

Certifications	CCC, CE, ISO 9001:2015
----------------	------------------------

## Installation Options

### Available Mounting Types

- B3
- B5
- B35
- B14
- B34