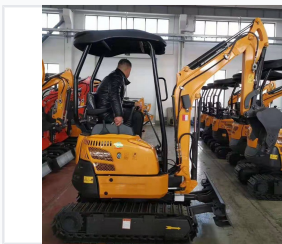


## 0.8 Ton Mini Crawler Excavator

This mini crawler excavator is designed for various excavation tasks. Its compact size allows for easy maneuverability in tight spaces, making it suitable for urban construction and landscaping.



### ADDITIONAL IMAGES



### Overview

#### Compact Power for Tight Spaces

This 0.8-ton mini crawler excavator is engineered for high performance in confined environments, offering a reduced-tail-swing design for maximum maneuverability. Powered by a reliable 3-cylinder diesel engine, it combines fuel efficiency with enhanced durability for demanding applications. The machine features adjustable crawlers for easy transport and stable operation, supported by an ergonomic pilot joystick control system for precise handling.

### Performance & Engine

#### Emission Standard

EPA Final Tier 4

#### Hydraulic System Components

- Nachai main pump
- Eaton rotary motor
- Nachai walking motor

#### Engine Type

3-cylinder, 4-cycle, liquid-cooled diesel

### Design & Maneuverability

#### Operational Metrics

**0.8 Ton**

Operating Weight

#### Design Highlights

Reduced-tail-swing, Adjustable crawlers, Retractable blade, ROPS/FOPS structure

## Operator Comfort

### Cabin & Control Features

- Air-suspension seat
- Wide entryways
- Italian-made pilot joystick
- Optional enclosed cab with A/C

## Maintenance & Attachments

Serviceability	180-degree open side door for daily check points
Compatible Attachments	Bucket, Hammers, Plate compactors, Augers