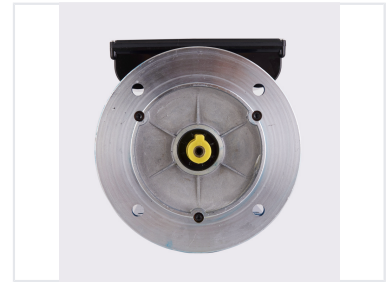
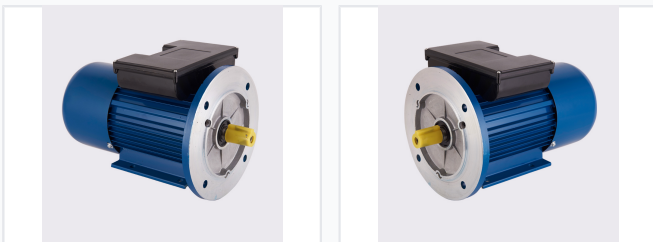


0.75kW Single Phase AC Induction Motor

This 0.75kW single-phase AC induction motor is designed for reliable and efficient power conversion. It features a robust construction with a finned or ribbed housing for efficient heat dissipation and a flange mount for secure installation.



ADDITIONAL IMAGES



Product Overview

YL Series Induction Motor

The YL series is a high-performance single-phase asynchronous motor designed for stability, efficiency, and ease of maintenance. Built to international IEC standards, it features a dual-capacitor design for reliable starting and running. With robust construction and low-noise operation, it is an ideal solution for agricultural machinery and general industrial applications.

Performance Metrics

Rated Power

0.75 kW

Power Output

Rated Voltage

220V

Frequency

50 Hz

Technical Specifications

Available Frame Sizes

- 80
- 90
- 100
- 112
- 132

Insulation Class

B

Protection Class

IP44

Mounting Configurations

B3, B5, B35, B14, B34

Compliance & Quality

Certifications

CCC • CE • ISO 9001:2015

Standards Met

IEC, IE1, IE2, GB/T19001-2006

Construction

Material Composition

100% copper wire windings