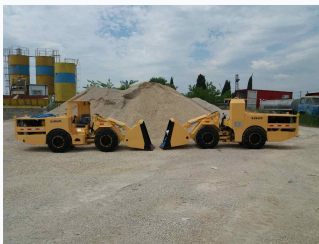


0.6 cu.m Underground Wheel Loader

This underground wheel loader has a 0.6 cubic meter bucket and a 1.2-ton loading capacity. Its articulated steering system provides maneuverability in confined spaces.



ADDITIONAL IMAGES



Product Overview

Compact Underground Power

The 0.6 cu.m underground wheel loader is specifically engineered for high-performance operation in narrow tunnels and confined mining environments. Combining a robust 1.2-ton loading capacity with an articulated design, it provides exceptional maneuverability without sacrificing power. Built for longevity and reliability, this machine utilizes premium engine and hydraulic components to ensure consistent productivity in demanding underground conditions.

Key Performance Metrics

Operating Capacity

0.6 m3

Bucket Volume

1.2 ton

Loading Capacity

42 kN

Max Shovel Force

Technical Specifications

Mechanical Data

Feature	Specification
Engine Power	47.5 kW
Operating Mass	5000 kg
Turning Radius (Inner)	1780 mm
Offload Height	1015 mm

Compliance and Quality

Industry Certifications

CE, QS9001, Mining Certificate

Maintenance and Logistics

Shipping Information

- Packaging: 20' GP container
- Production lead-time: 15-35 days
- Parts delivered with machine to site